

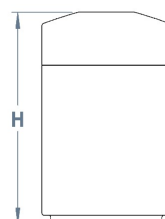
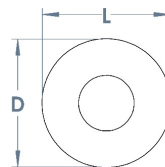


Rushton Litter Bin

This is a smart, sophisticated, contemporary litter bin that also has some size to it too. The Rushton Litter Bin is surface mounted and has a capacity of 150 litres and comes complete with internal slots that will hold a bag liner. Manufactured from grade 304 solid stainless steel, this bin is scratch resistant and very durable. So, it's a litter management solution with style and substance.

With a free-standing base, the Rushton Litter Bin has a top opening, but a side opening feature is also available.

Top opening - Dia: 510mm x H: 840mm
Side opening - Dia: 510mm x H: 1065mm



Materials, Finishes & Options

Stainless steel
Available in the options below;
for further details on our **stainless steel**
visit our **materiality page >>**

Standard

Premium



Brushed
satin



Bright
polish



Bead
blasted



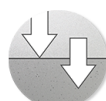
Mirror
Polished



DDA
Compliant



Anti-skate
studs



Surface mount
/ Root fixed

Fixtures

This Product can be customised with a range of optional fixtures. If you have any further bespoke requirements get in touch, our sales team will be happy to help.