



Lockable Fold Down Post

The fold down post is an extremely popular and inexpensive access control product used for restricting access to driveways and car parking spaces. Base plate secured, the post is 60mm diameter with a total height in the raised position 620mm.

Coming in a striking yellow colour as standard, the cast aluminium base plate is secured by 3No. M12 anchor bolts (not supplied), whilst the post can be locked in the upright or lowered position and is supplied with 2 keys for the cylindrical push button lock. Multiple orders can be supplied keyed alike or keyed to differ. Ground clearance is 102mm. Powder coat finish available in Black.

H: 620mm x Dia: 60mm

**TECHNICAL DRAWINGS
 AVAILABLE ON
 REQUEST**

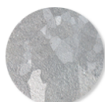
**PLEASE CONTACT OUR
 SALES TEAM**

Materials, Finishes & Options

Steel

Available in the options below;
 for further details on our **steel** visit our **materiality page >>**

Standard



Galvanised

Premium

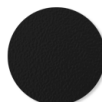


Powder coated

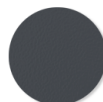
Colours

Available in a huge range of RAL colours.

Our most popular colours are;



Jet black



Graphite grey



Ultramarine



White

Fixtures

This product can be customised with a range of optional fixtures. If you have any further bespoke requirements **get in touch**, our sales team will be happy to help.



Keyed Alike



Banding