



# PROTECT

DISCREET PUBLIC SAFETY





# OPEN UP PUBLIC SPACES

PROTECT

DISCREET PUBLIC SAFETY

# IMPACT TESTED STREET FURNITURE







# CONTENTS

Introduction to the Protect Range .....	4-5
Understanding Testing Standards .....	6
Protect Core Details .....	7
Protect Seat .....	8
Protect Cycle Stand .....	9
Protect Litter Bin .....	10
Inspira Protect Details .....	11
Inspira Protect .....	12
Members of the PSSA .....	13
Contact Details .....	14

After attending a call out notice at Westminster in March 2020 **Bailey Street Furniture Group** have undertaken a vast project alongside **NPSA (National Protective Security Authority)** formally known as **CPNI**, to deliver a unified and cohesive suite of reinforced street furniture elements.

**Integrating effective security measures into the public realm to offer enhanced protection to pedestrians and urban infrastructure users while improving the aesthetic value of a space.**

## **THE BRIEF:**

- **Products must be affordable**
- **Products can be adapted to existing designs**
- **From a security perspective, the product must be designed to:**
  - Damage the impacting vehicle so it is not easily driveable; and/or*
  - Prevent the vehicle progressing beyond it; and/or*
  - Sufficiently delay the vehicles progress*
- **Submitted product designs were assessed and then taken forward to full-scale vehicle impact testing**
- **The level of testing will be ISO IWA 14-1 test: a single, head-on impact with a vehicle at 30mph.**

*(Please note due to the 100% successful pass rate some of the range has now been retested to IWA 14-1:2013 V/2500[N1G]/48/90, increase vehicle axle height and increase weight to 2.5T)*

**Bailey Street Furniture Group** have taken this brief and produced a suite of **design driven HVM based external furniture** as a consideration to the impending **Protect Duty** legislation.



## A COMPLETE SUITE OF **IMPACT TESTED** STREET FURNITURE



**Offering security & protection to pedestrians and urban infrastructure whilst enhancing the aesthetic value of the space.**

- **COMPLETE SUITE OF STREET FURNITURE** - SEATING, CYCLE PARKING, WASTE MANAGEMENT, PLANTING & MORE
- **IMPACT TESTED** - DESIGNED AND TESTED TO STOP A 2.5 TONNE VEHICLE TRAVELLING AT 30MPH
- **EASY INSTALLATION** - SHALLOW-MOUNTED TO MAXIMISE VERSATILITY AND MINIMISE DISRUPTION TO EXISTING UNDERGROUND INFRASTRUCTURE
- **FLEXIBLE DESIGN** - MODULAR & INTERCHANGEABLE
- **SOCIAL & ENVIRONMENTAL BENEFITS** - ENHANCES AESTHETICS AND ENCOURAGES BIODIVERSITY IN URBAN LANDSCAPES
- **DISCREET DESIGN** - BLENDS IN SEAMLESSLY WITH STANDARD STREET FURNITURE PACKAGES FROM BSFG



Members of the



# Understanding Testing Standards

**IWA 14** is an impact test standard detailing the method and means of measuring the performance outcome for impact-tested **vehicle security barriers (VSB)**.

**IWA14-1:2013** **PLANTER** **V/1500(M1)**/**48**/**90**:**0.0**



**IWA14-2013** = The test standard

**PLANTER** = Type of product

**V/1500(M1)** = Vehicle type *(in this case 1.5T family car)*

**48** = Vehicle speed *(48kph/30mph)*

**90** = Angle of Impact *(90°)*

**0.0** = Impact penetration  
*(in this case the vehicle did not travel past the product)*



# PROTECT CORE



PROTECT CORE utilises a shallow-mounted structural column to **support and reinforce** a full suite of street furniture elements.

## Protect Core Products Tested;

Protect Seat

Protect Cycle Stand

Protect Litter Bin

The range offers enhanced security and protection to pedestrians and public infrastructure without compromising the aesthetic value of a space.



Designed to be installed in built up areas featuring **shallow-mounted foundations** that allow for **high impact strength** without disrupting existing groundwork.

# Protect Seat

## IWA 14-1:2013 TEST RATING: V/2500[N1G]/48/90:0.0

The Protect Seat is tested to withstand impact from vehicles to IWA 14-1 standards. Featuring a corrosion resistant steel frame that is powder coated to specification and clad in Sapele timber slats. Optional armrests available. Can be combined with a table and additional bench to form a picnic set.

This seating unit sits atop a 'Dual Protect Impact Core' that is hot dip galvanised to BS EN 1461:2009 as standard and cast in concrete at a total depth of only 250mm.

### DIMS:

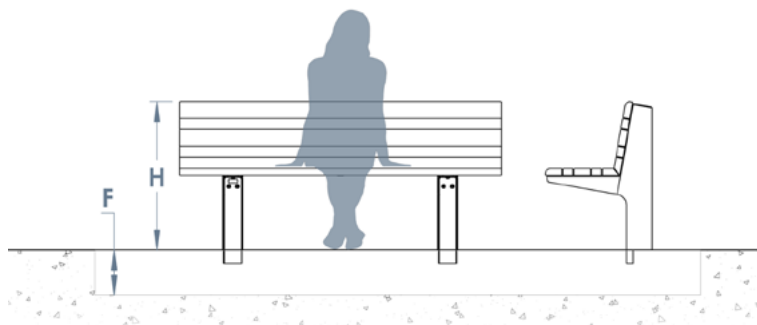
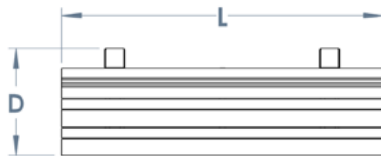
Above ground - W: 500 x L: 1800 x H: 828mm

Below ground - W: 1300 x L: 2200 x H: 250mm

### MATERIALS:

Seat - Galvanised & Powder-Coated Steel, Sapele Timber

Protect Core - Galvanised Steel





# Protect Cycle Stand

## IWA 14-1:2013 TEST RATING:

Single Core - V/1500[M1]/48/90:2.2

Dual Core - V/2500[N1G]/48/90:0.0

The Protect Cycle Stand is tested to withstand impact from vehicles to IWA 14-1 standards. As standard the cycle stand is manufactured in a grade 304 grit brushed finished stainless-steel sleeve, with the option of either Flat top or fully welded dome top and 2 Sapele hardwood timber bumpers. Also available in galvanised and powder-coated steel.

This Cycle Stand sits atop a 'Protect Impact Core' that is hot dip galvanised to BS EN 1461:2009 as standard and cast in concrete at a total depth of only 250mm.

## DIMS:

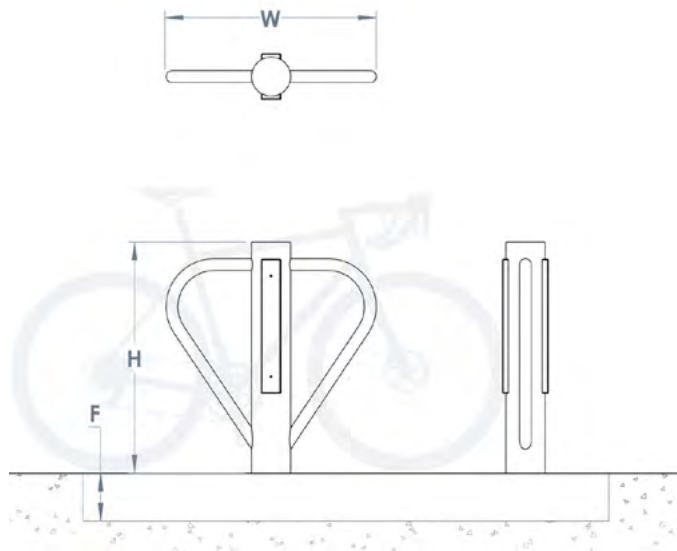
Above ground - W: 139 x L: 750 x H: 820mm

Below ground - W: 1300 x L: 1300 x H: 250mm

## MATERIALS:

Cycle Stand: G304/316 Stainless Steel, Sapele Timber

Protect Core - Galvanised Steel





# Protect Litter Bin

## IWA 14-1:2013 TEST RATING:

Single Core - V/1500[M1]/48/90:2.2

Dual Core - V/2500[N1G]/48/90:0.0

The Protect Litter Bin is tested to withstand impact from vehicles to IWA 14-1 standards. Featuring a corrosion resistant steel shell that is powder coated to specification, and a Sapele timber clad door with stainless steel fixtures. Available as a recycling bin option with 2 60L steel liners or a standard 120L capacity General waste version.

This Bin unit sits atop a 'Protect Impact Core' that is hot dip galvanised to BS EN 1461:2009 as standard and cast in concrete at a total depth of only 250mm.

## DIMS:

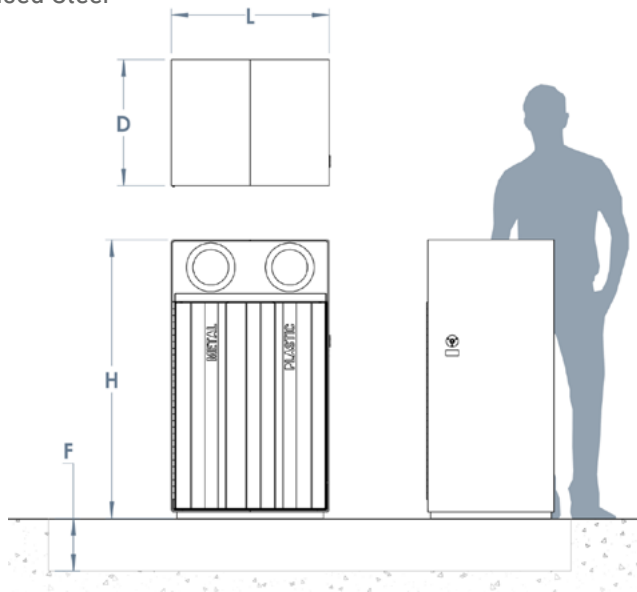
Above ground - W: 480 x L: 600 x H: 1061mm

Below ground - W: 1300 x L: 1300 x H: 250mm

## MATERIALS:

Bin Unit - Galvanised & Powder-Coated Steel, Sapele Timber, Stainless Steel

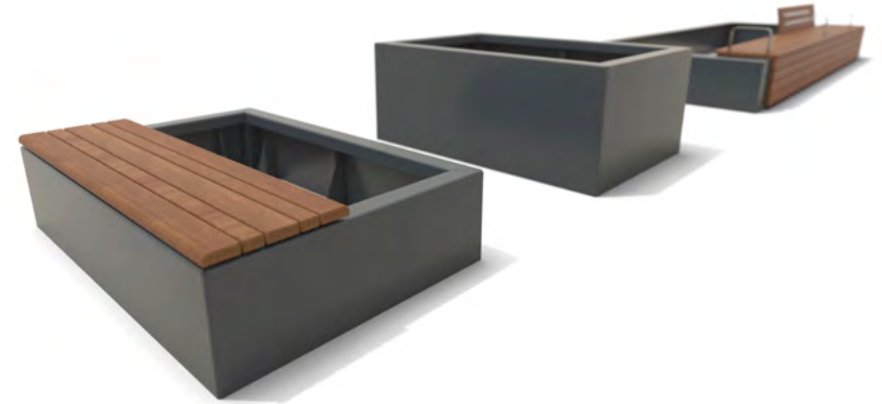
Protect Core - Galvanised Steel





# INSPIRA PROTECT

INSPIRA PROTECT is a modular planting system featuring a reinforced structure designed for **Hostile Vehicle Mitigation (HVM)** offering security & protection to pedestrians and infrastructure without compromising on the aesthetic values of a space.



**Bringing a range of social and economic benefits to the built environment;**

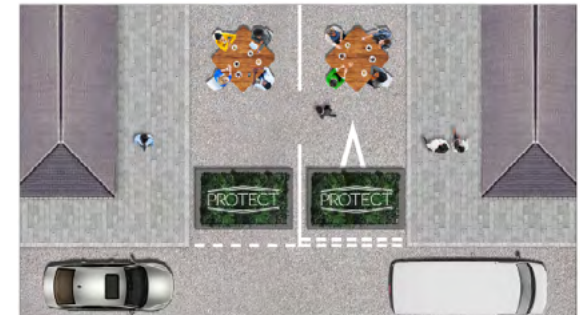
## TRAFFIC CALMING

*Inspira Protect can be positioned to achieve a zig zagged route for vehicles to travel in built up areas – this reduces the chance of a vehicle reaching a speed to cause damage. The benefit also rather than just bollards is the addition of nature and biodiversity to the areas.*



## EXPANDING PEDESTRIANISED AREAS

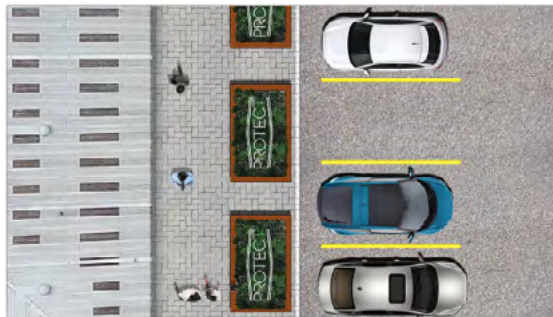
*Inspira Protect can be used to safely and effectively close off existing roads without required deep foundations of other certified impact resistant products. Opening the space to hospitality and the community.*



## PROTECTING URBAN INFRASTRUCTURE

*Inspira Protect is ideal for positioning in front of buildings and infrastructure in busy retail parks for example.*

*This allows for a clear and safe space for pedestrians to move around and eliminates the potential of ram raid attacks.*



## BORDERING OPEN PUBLIC SPACES

*Inspira Protect can be used to securely section off green spaces without impacting on the aesthetic value of the space and still allow access for pedestrians and cyclists. The planters also absorb sound thus providing a more ambient environment to a standard bollard.*





# Inspira Protect Planter

## IWA 14-1:2013 TEST RATING:

H: 450mm - V/1500[M1]/48/90:0.0

H: 600mm - V/2500[N1G]/48/90:0.0

Inspira Protect Planters has been tested to IWA 14-1 standards to withstand impact from both 1.5 and 2.5 tonne vehicles.

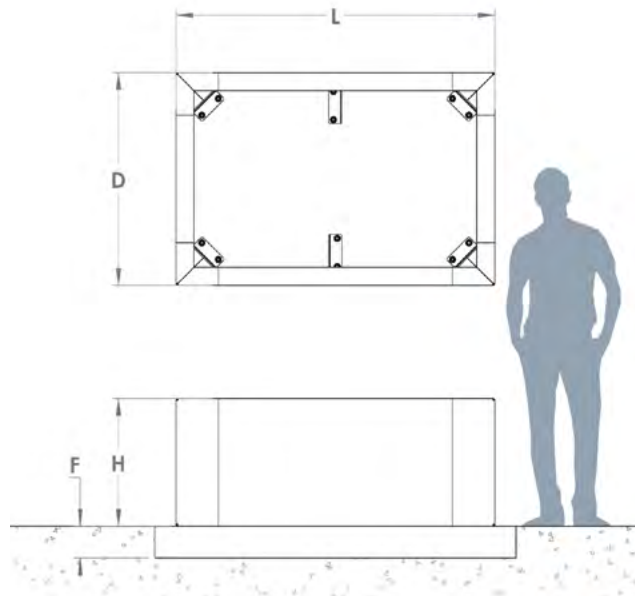
Inspira Protect features an impact resistant fully-welded steel support frame. Sub frame and cladding panels are all hot-dip galvanised to BS EN 1461:2009 and powder coated to site specification. The planter sits at top a slab foundation of 150mm. The modular design can be scaled up where needed. The 2.5 Tonne version features a higher axle impact point with a height of 600mm.

## DIMS:

H: 450/600mm x L: 1500 x W: 1000mm

## MATERIALS:

Bin Unit - Galvanised & Powder-Coated Steel





# MEMBERS OF THE PSSA

---



**Bailey Street Furniture Group** is part of the **PSSA (Perimeter Security Suppliers Association)**. The PSSA represents companies worldwide who manufacture, install and consultant to provide high levels of physical security, including HVM. All members are committed to the highest level of quality to ensure public safety and client protection, displaying the PSSA logo as an indication of their quality.



# OPEN UP PUBLIC SPACES WITH THE PROTECT RANGE

If you have an idea or proposal for an outdoor space, we would be happy to advise how our PROTECT range could be used for passive security protection.

Our team of technical specialists and product designers can work with you to develop a solution that will meet the design intent of the site and maximise visual appeal in a secure environment.



bailey  
street furniture  
group

## Taking your HVM designs forward



[www.bsfg.co.uk](http://www.bsfg.co.uk)



01625 322 888